



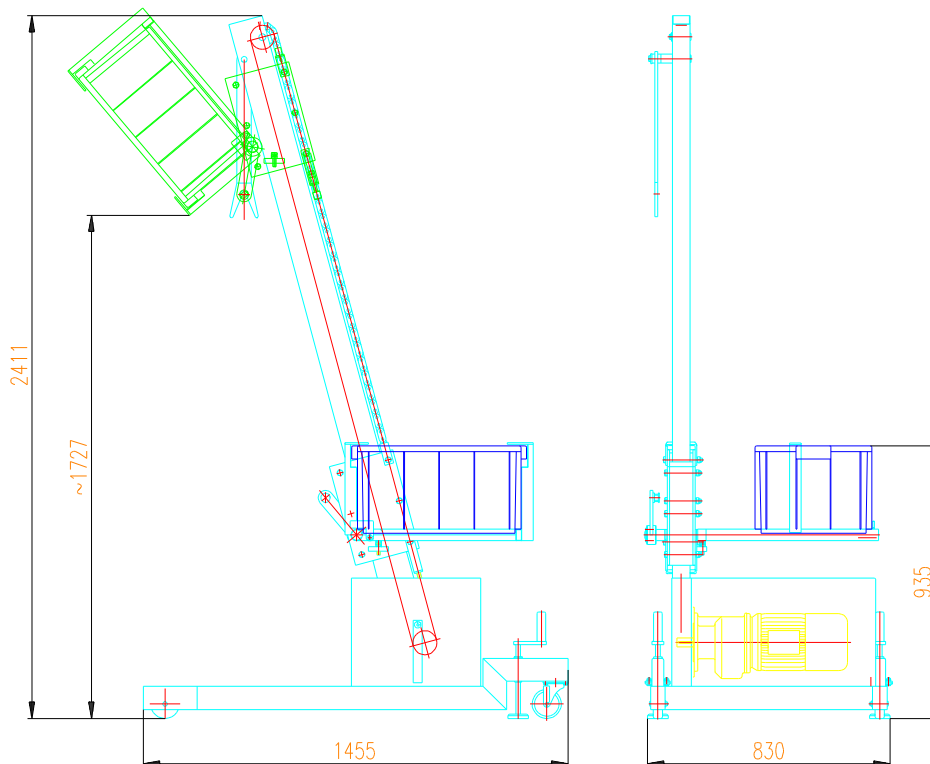
# LIFTING AND TIPPING DEVICE FOR BOXES chain



---

**Strojírna Pálava Maxima s.r.o.**

DESÁTKOVÁ 124/15, 623 00 BRNO KOHOUTOVICE  
Manufactory: TOVÁRNÍ 34, 679 32 SVITÁVKA, CZECH REPUBLIC  
tel: +420 - 516 453 834, fax: +420 - 516 453 834  
e-mail: [info@s-palava.cz](mailto:info@s-palava.cz); [www.s-palava.cz](http://www.s-palava.cz)



Box lift is a device for lifting the plastic carriage boxes and tilting their contents to certain processing machine. The base is constructed for plastic boxes with capacity of 30 kg. The construction can be modified to the customer's wish (for example: different type and box dimension, other tilting height etc.) Product is made from stainless steel; capsular chain is also stainless steel.

### **Technical data**

Height	2411 mm
Tilting height	1727 mm
Max. tilting angle	125°
Load capacity	45 kg
Lifting speed	168 mm / s
Power	0,55 kW
Control voltage	220 V / 50 Hz
Total weight	145 kg